



Design The WORLD

Hanwha Engineering & Construction

Design The WORLD

Hanwha Engineering & Construction

The pursuit of our dreams has never ceased.

The dreams of making a better world by connecting people with the world and harmonizing with nature nurture us into engineer and contractor seizing the world's attention.

Our challenges to build new cities for people, construct infrastructure and erect landmarks never stops.

Not settling for the present, passionately and vigorously pushing ourselves beyond the limit, and ceaselessly challenging for the tasks that some may think impossible, that is the goal we pursuit.

We design a bigger world.



Contents

Hanwha	02
Global Network	04
Hanwha E&C History	06
Research & Development	08
Safety & Green Management	10
Shared Growth	11
Human Resource Development	12
Social Responsibility	13
Performance Highlights	14
Civil Works	16
Building Works	34
Housing	58
Plants	72
History Highlights	90

Hanwha

02-03

About Company

Broadening its vision on the global stage

Established in 1952, Hanwha provides new and distinguishing products and services in manufacturing, engineering & construction, finance, and service & leisure fields with 56 domestic affiliates and other 249 global networks. Pioneering new business areas, Hanwha has been celebrating continued growth, and is taking up the challenges for better human life by gearing up with distinguished competitiveness in solar energy, defense, and petrochemical industries.



Foundation

Oct. 1952



Domestic Subsidiaries

56



Global Network

249



Employees

40,534

Total Assets **KRW 182 tril**

Sales **KRW 63 tril**

Manufacturing and Construction

2016 Sales KRW 31 tril. 290.0 bil.

Hanwha www.hanwhacorp.co.kr
 Hanwha Techwin www.hanwhatechwin.co.kr
 Hanwha Thales www.hanwhathales.com
 Hanwha Defense Systems
www.hanwha-defense.com
 Hanwha Chemical hcc.hanwha.co.kr
 Hanwha General Chemical hgc.hanwha.com
 Hanwha Total www.hanwha-total.com
 Hanwha E&C www.hwenc.co.kr
 Hanwha Q CELLS www.hanwha-qcells.com
www.q-cells.com, www.hanwha-solar.com
 Hanwha Q CELLS Korea www.hanwhasolar.com
 Hanwha Advanced Materials www.hwam.co.kr
 Hanwha Energy hec.hanwha.co.kr
 Yeochun NCC www.yncc.co.kr
 Hanwha City Development www.hcd21.co.kr

Finance

2016 Sales KRW 27 tril. 150.0 bil.

Hanwha Life www.hanwhalife.com
 Hanwha General Insurance
www.hwgeneralins.com
 Hanwha Investment & Securities
www.hanwhawm.com
 Hanwha Asset Management
www.hanwhafund.co.kr
 Hanwha Investment
www.hanwhainvestment.co.kr
 Hanwha Saving Bank
www.hanwhasbank.com

Services and Leisure

2016 Sales KRW 4 tril. 100.0 bil.

Hanwha Hotels & Resorts
www.hwrc.co.kr
 Hanwha Galleria
www.hanwhagalleria.co.kr
 Hanwha Galleria Timeworld
ir.timeworld.co.kr
 Hanwha 63 City www.63realty.co.kr
 Hanwha S&C www.hsnc.co.kr
 Hanwha Station Development
www.hwsd.co.kr
 Hanwha Eagles
www.hanwhaeagles.co.kr

*This financial data is a simple summation of the sales figures of Hanwha Group and major affiliates of Korea and overseas.(Source : Hanwha Group)

Global Network

04-05

Global Network



AMERICA

- Brazil Hanwha Techwin (sales and tech support)
- Canada Hanwha Q CELLS Canada (sales & marketing)
- Chile Hanwha Q CELLS (downstream solar)
- Mexico Hanwha Advanced Materials (auto parts)
- USA Hanwha International (trading)
- USA Eagle Petroleum (oilfield development)
- USA Hanwha Techwin (video surveillance system sales)
- USA Hanwha Q CELLS (downstream solar, sales & marketing)
- USA Universal Bearings (bearings)
- USA Hanwha America Development (real estate development)
- USA Hanwha Advanced Materials (auto parts)
- USA Hanwha TechM (powertrain assembly)
- USA Hanwha Azdel (auto parts)
- USA Hanwha Machinery America (machine tool sales)
- USA Hanwha Life Investment (investment)

EUROPE & AFRICA

- Czech Republic Hanwha Advanced Materials (auto parts)
- France Hanwha Q CELLS (sales & marketing)
- Germany Hanwha Europe (trading)
- Germany Hanwha Advanced Materials (auto parts)
- Germany Hanwha Q CELLS GmbH (solar cells, modules, R&D, sales & marketing)
- Germany Hanwha Q CELLS Berlin (sales & marketing)
- Germany Hanwha TechM (machine tools sales)
- Italy Hanwha Q CELLS (sales & marketing)
- UK Hanwha Techwin (video surveillance system sales)
- UK Hanwha Q CELLS (sales & marketing)
- Turkey Hanwha Q CELLS (modules, sales & marketing, downstream solar)

249

- China
- ASIA & MIDDLE EAST
- EUROPE & AFRICA
- AMERICA

Hanwha
Global Networks

*As of March 2017

China

- Beijing Hanwha China (supporting Hanwha affiliates in China)
- Beijing Hanwha Advanced Materials (auto parts)
- Dongguan Hanwha Engineering Plastic (polypropylene)
- Hangzhou Sino-Korea Life (life insurance)
- Hong Kong Hanwha Corporation (trading)
- Lianyungang Hanwha Q CELLS Technology (PV ingots, wafers)
- Ningbo Hanwha Chemical (PVC)
- Qidong Hanwha Q CELLS (solar cells, modules, R&D)
- Shanghai Hanwha International (trading)
- Shanghai Hanwha Chemical Trading (trading)
- Shanghai Hanwha General Chemical (marketing)
- Shanghai Hanwha Petrochemical Trading (polyethylene and polypropylene sales)
- Shanghai Hanwha Q CELLS (sales & marketing)
- Shanghai Hanwha Advanced Materials (auto parts)
- Suzhou Hanwha TechM (machine tools and powertrain assembly)
- Tianjin Hanwha Techwin (video surveillance systems)

ASIA & MIDDLE EAST

- Australia Hanwha Q CELLS (sales & marketing)
- Cambodia Think Biotech (reforestation)
- Cambodia Amru and Hanwha International (agriculture exports)
- India Hanwha International (trading)
- India Hanwha Chemical (sales)
- India Hanwha Q CELLS (sales & marketing)
- Indonesia Hanwha Life (life insurance)
- Japan Hanwha Q CELLS (sales & marketing)
- Japan Hanwha Techwin (R&D)
- Japan Acropark Golf (golf club and resort operation)
- Malaysia Hanwha Chemica (sales & marketing)
- Malaysia Hanwha Q CELLS (solar cells and R&D)
- Malaysia Hanwha Q CELLS Solar Power (sales & marketing)
- Saipan World Corporation (resort operation)
- Singapore Hanwha International (trading)
- Saudi Arabia International Polymers Company (EVA, LDPE)
- Saudi Arabia Gulf Advanced Cable Insulation (W&C)
- Saudi Arabia Hanwha Saudi Contracting (engineering & construction)
- Thailand Hanwha Chemical (alkali soluble resin)
- Thailand Hanwha Q CELLS (downstream solar)
- Vietnam Hanwha Life (life insurance)

Hanwha Engineering & Construction contact information

- Hanwha America Development**
7000 Hawaii Kai Dr. Honolulu, HI 96825 U.S.A. (T. 1-312-833-5277)
- Hanwha Canada Development** 2860 INNOVATION DRIVE LONDON, ON, CA
- Hanwha Engineering & Construction Iraq Branch Office**
Harlow Riverside, Villa 775, Street 32, District 925, East Karrada, Baghdad, Iraq (T. 82-2-729-4150)
- Hanwha Engineering & Construction Kuwait**
23rd F, Al-Madeena 2, Plot 42, Block 11, Fahad Al-Salem Street, Qibla, Kuwait city (T. 82-2-729-5141)
- Hanwha Saudi Contracting Co. Ltd.**
Delmon Building M Floor, Prince Sultan Rd, Al-Khobar, Kingdom of Saudi Arabia,
P.O.Box 31156 Al-Khobar 31952 (T. 82-2-729-5824)

History

06-07

Hanwha E&C History

Weaving a new history of engineering and construction

- 1967 Founded Pacific Engineering & Construction
- 1976 Obtained International Contractor certification
- 1979 Completed Seosomun Building
- 1979 Completed Jamsil Arena
- 1988 Renamed Duksan Civil Engineering & Construction Co.
- 1989 Completed Hanwha Chemical HDPE plant
- 1991 Obtained International Contractor certification
- 1993 Completed Yecheon NCC Plant
- 1996 Company acquired by Hanwha Corp.
- 2002 Hanwha E&C separated from Hanwha Corp.
- 2003 Received Korean Bronze Tower Industrial Medal
- 2005 Completed Galleria Palace/ HI-Brand
- 2008 Received the first eco-technology license for Domestic Membrane Water treatment
- 2009 Developed Building on an Integrated Photovoltaic System(BIPV)
- 2010 Completed "EcoMetro" in Incheon,
Completed Gyeongin Express Way,
Completed Cheongnyangni Station Complex
- 2011 Completed Seoul Forest Galleria Forêt
Completed Ministry of Knowledge Economy New Technology accreditation
Joined the One Trillion Won Club in winning public project orders
- 2012 Won the largest scale overseas construction,
\$8 billion of Bismayah New City in Iraq
- 2013 Ranked 10th among Domestic Construction Companies
Achieved 6th place as public sector contractor
Awarded grand prize for promotion of Cooperation in construction
- 2014 Ranked 9th among Domestic Construction Companies
Accumulated \$ 14 billion worth of overseas construction contracts
Completed the world's largest stadium, Philippine Arena
- 2015 Won a \$2 billion order to build the social infrastructure for Bismayah New City in Iraq
New order for construction of Sin-Gori Units No. 5 and 6 Project
- 2016 Signed MOU for new city in Saudi Arabia
Won SCPC petro chemical plant construction project (\$400 million)
- 2017 Achievement Cumulative Supply Over 70,000's Generation of Dream & Green and Studio Apartments

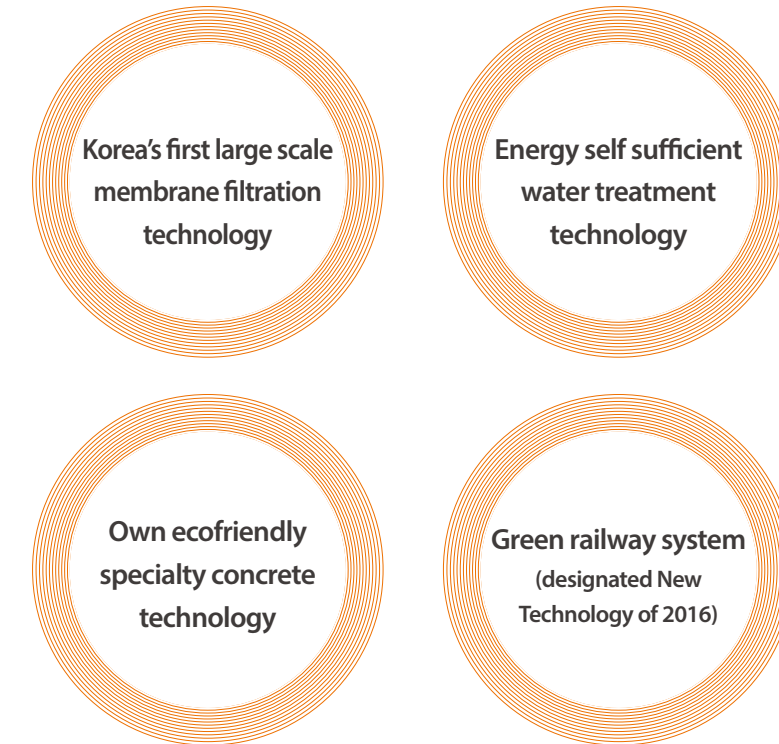
Since the separation from Hanwha Corp. in 2002, Hanwha E&C has enjoyed continued growth, recording high growth of 30% in average each year. Executing mega projects such as 8,000 plus unit brand town Dream & Green World Incheon EcoMetro in 2006, \$8 billion worth of Iraq Bismayah New City Project in 2012, and \$2.1 billion worth of Iraq social infrastructure in 2015, Hanwha has grown into an world's eye catcher.



Research & Development

08-09
Hanwha E&C

Leading ecofriendly green technology
with ceaseless challenge and passion for
new technology



With its continuous endeavor to strengthen technical competitiveness in ecofriendly green technology and other innovative breakthroughs, **Hanwha** is praised domestically and internationally for its excellence. Its continuous investment in R&D and endless challenge will open unfold a new day of 'No. 1 Technology Hanwha E&C'!



Safety & green management

10-11
Hanwha E&C

Promoting customer satisfaction and trust through effective safety & green management

Hanwha established company-wide health, safety and environment management policies and obtained the international occupational health and safety management system certification (OHSAS 18001/ KOSHA 18001) to carry out its health and safety management in an active and systematic fashion. Its domestic and overseas operational sites have continuously attained zero accidents through a range of efforts including the operation of in-house safety control programs, robust proactive risk management, risk check and improvement by all employees, and prior skill development for suppliers.



Partnership management

Growing together with partners on established coexistence culture

Hanwha E&C provides partners with a variety of programs to help improve their competitiveness by means of training on various technical disciplines, finance on and off line as well as joint implementation of research and development projects, and technological assistance. Furthermore, to support their financial stability and financing arrangements, Hanwha E&C enforces various financial schemes such as direct lending, win-win funds, and network loans. As part of its material efforts to support them, Hanwha E&C directly communicates with suppliers by providing an array of events including meetings with top-tier suppliers, mutual growth promotions and reflect their concerns in its own mutual growth policies. These efforts to build solid partnerships are also extended to local suppliers in its overseas market.



Human Resources Development

12-13
Hanwha E&C

Competing with the world with passion and competency

Individuals are the dynamic force that drives our present and leads us into the future. Every competitive edge in the construction industry comes from people. Engineers perspiring at construction sites all over the world, marketers meeting with customers around the globe, researchers sitting up all night absorbed in technological developments, and managers providing efficient support are all the building blocks of It provides logical systems and structured education programs to support all its members to grow into a valuable talent so that they can advance onto the global stage, display their capabilities, and reach their potential. One of key objectives of Hanwha E&C is to create a pleasant organizational culture where a healthy work-life balance is maintained. Hanwha E&C is developing high-caliber talents who will lead the future of the construction industry with their brilliant creativity and unrivaled enthusiasm.



Social Responsibility

Dreaming the world where people are happy

Every executives and employee of Hanwha reaches out to people in need, participating in community volunteering services to give back to the community. carries out a wide range of activities every year to help people in need live in a brighter and healthier environment, including the Dream & Green Library Support Project, its main social contribution initiative, voluntary services for social welfare facilities, volunteering in soup kitchens for the homeless, making kimchi for the poor, and delivering charcoal briquettes to help heat the homes of the underprivileged.



Performance Highlights

For prosperous life of customers, Hanwha E&C builds foundation from social infrastructure forming the base of society through living space for leisurely life, and to architectural landmarks of cities.



Civil Works

Expressways Roads Bridges & Tunnels Complex Development
Complex development / Development works Waterworks / Sewage facilities
River maintenance / Ports



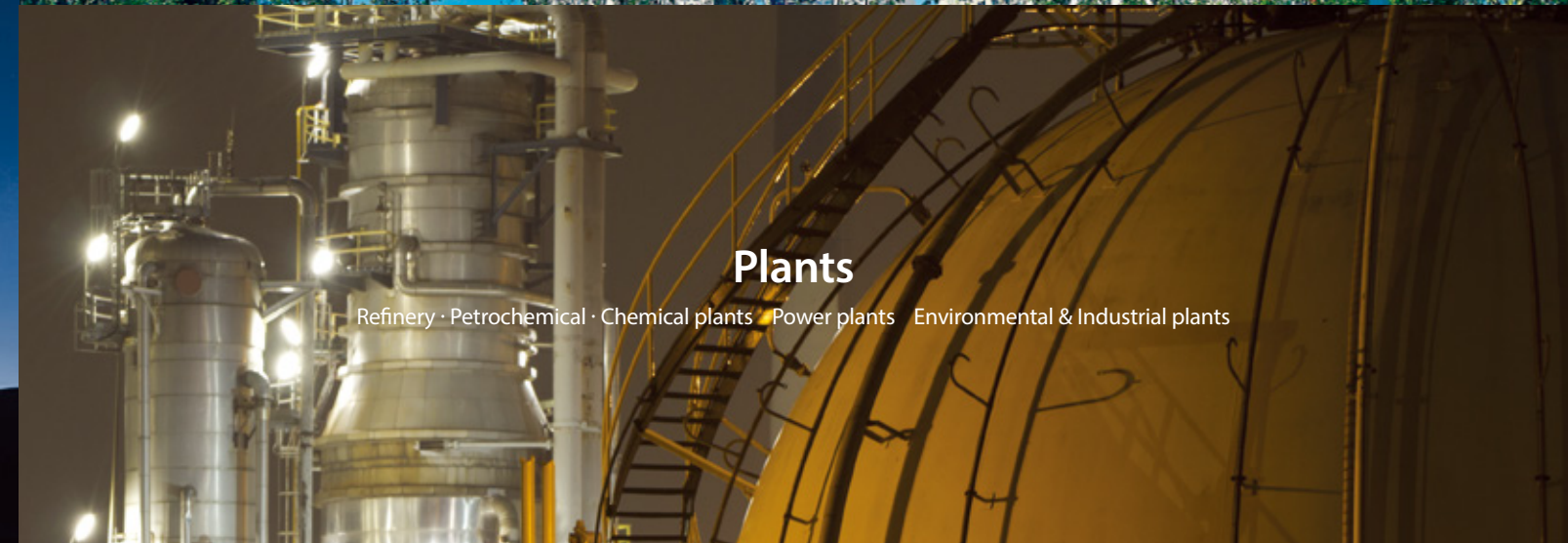
Building Works

Overseas projects Business facilities Business & Special facilities IDC / Sports facilities
Commercial facilities / Education & Research facilities Cultural facilities
Station facilities Leisure & Medical facilities



Housing

Domestic development projects Apartments
Commercial-residential complexes & Studio apartments



Plants

Refinery · Petrochemical · Chemical plants Power plants Environmental & Industrial plants



Infrastructure

Enabling convenient life with daily life infrastructure

Civil Works

Expressways Roads Bridges & Tunnels Complex Development
Complex development / Development works Waterworks / Sewage facilities
River maintenance / Ports

Civil Works

Expressways

18-19

Business Overview

1	4
2	5
3	6

1. Pyeongtaek-Siheung Expressway

Pyeongtaek, Korea Oct 2007 to Dec 2013
Total length 42.6km Width 23.4m - 30.6m
Bridge 2,760m

2. West Suwon-Osan-Pyeongtaek Expressway

Osan to Hwaseong, Korea
Jun 2005 to Oct 2009
Total length 4.0km Width 23.4m

3. Damyang-Seongsan Expressway

Hamyang, Korea Nov 2008 to Dec 2015
Length 6.36km Width 23.4m
7 short bridges totaling 707m 1 tunnel 624m

4. 3rd Gyeongin Expressway (Siheung-Namdong)

Siheung to Incheon, Korea
Nov 2005 to Oct 2009
Total length 14.3km Width 23.4m - 30.6m
Namdong Grand Bridge length 785m

5. Sangju-Andong Expressway

Sangju-Andong, Korea
Aug 2014 to Dec 2016
Length 10.07km Width 23.4m

6. Sangju-Yeungcheon Expressway

Sangju-Yeungcheon, Korea
Aug 2014 to Dec 2016
Length 12.935km Width 23.4m



Civil Works

Road

20-21

Business Overview

1	3	
4	5	
2	6	7

1. Access roads to

Daedeok Techno Valley

Daejeon, Korea Jul 2008 to Jun 2010
Total length 1.827km Width 30m
Bridge 730m

2. Beopwon-Sangsoo Expressway

Beopwon-Sangsoo, Korea
Mar 2005 to Dec 2014
Total length 10km Width 20m
Bridge 1.7km Tunnel length 720m

3. Namwon-Gokseong Expressway

Namwon-Gokseong/Osan-Gyeongmyeon,
Korea Dec 2005 to Dec 2014
Total length 15.0km Width 20m Bridge 2km

4. Local road 358 (Gimpo – Gwansan)

Goyang - Paju, Korea Nov 2007 to Jun 2010
Total length 3.62km Width 21 - 28m

5. Jangsu Bypass

Iksan, Korea Aug 1997 to Dec 2004
Total length 6.61km Width 18.5m
Bridge 347m

6. Access roads to Asan Techno Valley

Asan, Korea Feb 2009 to Jun 2011
Total length 1,441m Bridge 366m

7. Pyeongtaek Port(Poseung National Industrial Complex) - Cheongbuk(songtan) Expressway

Pyeongtaek, Korea Apr 2003 to Jan 2010
Total length 5.15km Width 22.0m
Bridge 330m 4 bridges



Civil Works

Bridges & tunnels

22-23

Business Overview

1	4
2	
3	5

1. Ulsan Grand Bridge

Ulsan, Korea Jun 2010 to May 2015
Suspension bridge length 2.97km
Tunnel length 1.55km

2. Incheon Grand Bridge

Incheon, Korea Oct 2004 to Oct 2009
Total length 12.343km Width 31.4m
Bridge section length 11.658km
Center span 800m

3. Oksun Grand Bridge

Jecheon, Korea Dec 1996 to Oct 2001
Total length 450m Width 11m
Highest bridge pier 60m
Center span 180m

4. Sihwa Grand Bridge

Hwaseong to Ansan, Korea
Mar 2008 to Mar 2013
Total length 3.3km
(super long-span bridge 2.76km)
Width 23.4m(4 lane)

5. Hanbit Grand Bridge

Daejeon, Korea Jul 2008 to Jun 2010
Total length 1.827km
Road width 28.4m Bridge width 30m
Bridge length 730m 3 bridges





Civil Works

Complex development

24-25
Business Overview

Development of Daedeok Techno Valley

Daejeon, Korea
Feb 2001 to Jun 2007
Site area 4,231,424m²
Roads 16.5km

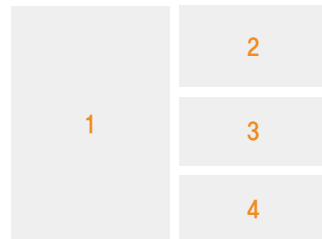
The Daedeok Techno Valley, a cutting-edge venture complex city, was a large development project built with participation from **Hanwha Group**. Its construction started in 2001 and was completed in 2007. The valley has a total area of 4,231,424m² and was created with industrial, residential, commercial, leisure and public sites, along with infrastructure facilities such as access roads into the valley and roads within the valley. Housing some 700 high-tech companies, the valley is surrounded by an abundant natural environment and convenient residential, commercial, cultural and leisure facilities. It is regarded as Korea's best complex city where job centers and housing options are in close proximity.

Civil Works

Complex development

26-27

Business Overview



1. Happy City Plot 3-1

Sejong City, Korea Aug 2010 to Dec 2015
Site area 1,500,000m²
Roads within premises 12.56km

2. Groundwork for Asan Techno Valley

Asan, Korea Feb 2007 to Jun 2012
Site area: 2,970,000m²
Roads within premises: 21.961km

3. Groundwork for Cheongna Lakepark

Incheon, Korea Jun 2012 to Dec 2016
Site area 5,537,770m²

4. Groundwork for Seosan Techno Valley

Seosan, Korea Mar 2009 to Aug 2012
Site area 1,994,092m²
Roads within premises 19.134km





Civil Works

Complex development/
Development works

28-29

Business Overview

1	4	
2	3	5



1. Groundwork for Gangneung Yucheon Complex

Gangneung, Korea Jun 2008 to Dec 2012
Site area about 673,305m²
National Roads & Roads within premises 8.03km

2. Jade Palace Golf Club

Chuncheon, Korea Feb 1996 to May 2004
Site area 990,000m² 18 holes

3. Taeon Golden Bay Golf Club

Taeon, Korea Jun 2008 to Apr 2010
Site area 1,400,000m² Public 9 holes,
member-only 18 holes

4. Groundwork for Cheonwang District

Seoul, Korea Apr 2007 to Dec 2011
Site area about 485,076m²
Roads within premises 4.842km

5. Groundwork for Gunja Landfill

Siheung, Korea May 1987 to Nov 1996
Landfill area 4,826,500m²
Shore 6,000m×80m
Roads 10,000m×30m



Civil Works

Waterworks /
Sewage facilities

30-31

Business Overview

1	2	6
3	4	7
5		8



1. Geomdan Sewage Treatment Facility

Incheon, Korea Apr 2004 to Feb 2008
Treatment capacity 40,000m³/day

2. Sincheon, Jangheung and Songchu Sewage Treatment Facilities in Yangju

Yangju, Korea Mar 2003 to Aug 2010
Treatment capacity 70,000m³/day

3. Asan Techno Valley Waste Water Treatment Facility (Phase I)

Asan, Korea Mar 2009 to Sep 2010
Treatment capacity 5,000m³/day

4. Paju Wolleung High-Tech Industrial complex (Phase 2)

Paju, Korea May 2012 to Apr 2014
Treatment capacity 9,000m³/day

5. Yeongdeungpo Water Purification Plant

Seoul, Korea Jun 2009 to May 2010
Treatment capacity 25,000m³/day

6. Geumchon Sewage Treatment Facility, Paju

Paju, Korea Mar 2003 to Mar 2005
conduit 10.45km
Treatment capacity 27,000m³/day

7. Unbuk Sewage Treatment Facility

Incheon, Korea Jan 2010 to Jan 2012
Extension 11,000m³/day

8. Hyangnam 2 Water Quality-Recovery Center, Hwaseong

Hwaseong, Korea Jul 2012 to Dec 2015
Treatment capacity 17,000m³/day

Civil Works

River maintenance /
Ports

32-33

Business Overview

1	3
2	4

1. Nakdong River Restoration Project Section 31 (Gumi District No. 7)

Gumi, Korea Feb 2010 to Dec 2011

River maintenance water storage
channel 5.95km

Dredging and excavation 156,000,000m³

2. Geum River Restoration Project Section 1 (Seocheon District)

Seocheon, Korea Feb 2010 to Feb 2012

River course maintenance 5,299,000m³

Levee enhancement 5.33km

3. Yeosu Oil Tank Terminal

Yeosu, Korea Jul 1992 to Oct 1995

Berthing length 4,500m

Landfill area 845,059m²

4. Ulsan New Harbor

Ulsan, Korea May 2004 to Apr 2009

Container and multipurpose quay
920m(caisson type)





Landmark

Increasing landmarks characterizing cities

Building Works

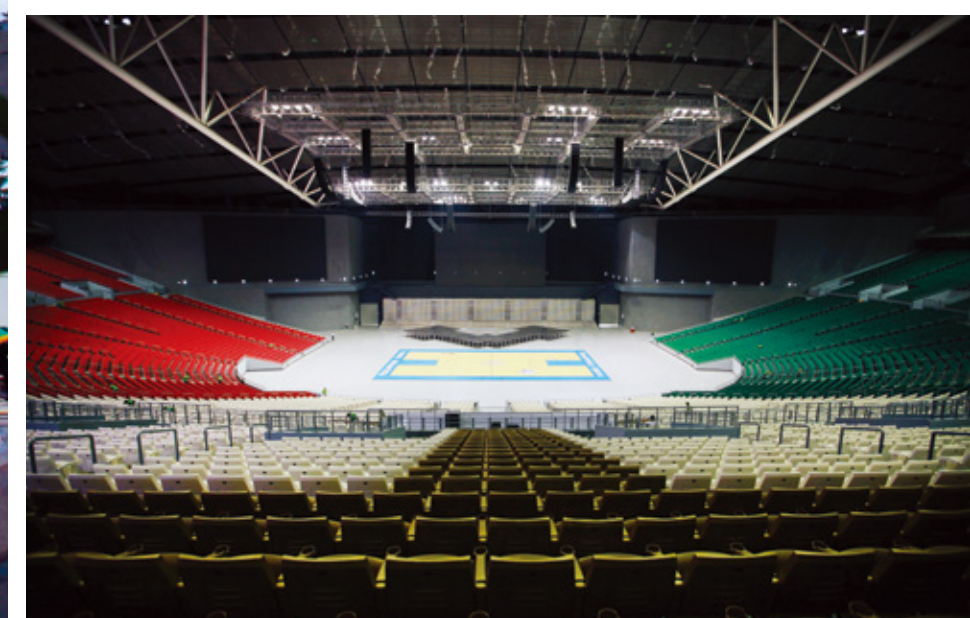
Overseas projects Business facilities Business & Special facilities IDC / Sports facilities
Commercial facilities / Education & Research facilities Cultural facilities
Station facilities Leisure & Medical facilities



Building Works
Overseas projects

36-37
Business Overview

Bismayah New City Project, IRAQ
2012 to 2021 Creating a new city on a
1,830 hectare site with 100,000 residential units



Building Works
Overseas projects

38-39
Business Overview

Philippine Arena Project

Aug 2011 to Feb 2014 Indoor assembly and sports facilities with a total floor space of 99,000m² (51,000 seats)(World's largest indoor arena)



Building Works

Overseas projects

40-41

Business Overview



- 1. Riverside J**
New York, US Jan 2007 to Oct 2010
23-story building and 38-story building
Total floor space of 82,720m² 496 units
- 2. 7000 Hawaii Kai Drive**
Hawaii, US Dec 2013 to May 2016
10-story 2 buildings Site area of 15,378m²
Total floor space of 49,174m² 269 units
- 3. Lancaster Condominium**
Chicago, US Aug 2003 to Nov 2005
29-story building Site area of 3,461 m²
Total floor space of 39,887m² 304 units
- 4. Chandler Condominium**
Chicago, US Nov 2005 to Apr 2009
35-story building Site area of 2,870m²
Total floor space of 61,317m² 304 units
- 5. Village Market**
Chicago, US Feb 2010 to Sep 2015
Site area of 5,749m²
Total floor space of 20,000m² Shopping arcade

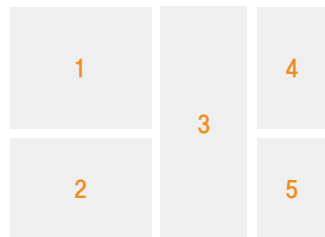


Building Works

Business facilities

42-43

Business Overview



1. Seoul Central Post Office

Seoul, Korea Sep 2003 to Aug 2007
21 stories above ground and 7 below
Total floor space of 72,671 m²

2. Gangseo Bizmetro

Seoul, Korea May 2010 to Mar 2012
15 stories above ground and 3 below,
2 buildings
Total floor space of 74,656 m²

3. Hanwha Building Jangyo-dong

Jung-gu, Seoul Jan 1985 to Dec 1987
4 basement and 29 ground levels, GFA of
74,375 m² Remodeling period Jan 2016 to
Sep 2019 Remodeled area 94,502 m² Scope
of works interior and exterior including solar
panel installation

4. Hanwha Investment & Securities Building, Yeouido

Seoul, Korea Dec 1991 to Mar 1995
27 stories above ground and 7 below
Total floor space of 59,641 m²

5. Hanwha Building, Sogong-dong

Seoul, Korea Jun 1995 to Nov 1997
19 stories above ground and 8 below
Total floor space of 47,549 m²



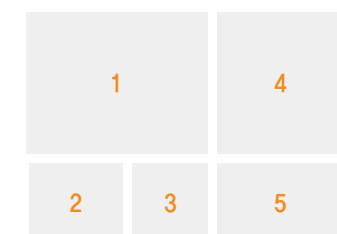


Building Works

Business facilities

44-45

Business Overview



- 1. The - K twin towers**
Seoul, Korea May 2010 to Apr 2012
16 stories above ground and 6 below
Total floor space of 83,831 m²
- 2. Seosan Solar Venture Complex**
Seosan, Korea Sep 2015 to Feb 2016
4 stories above ground and 1 below
Total floor space of 8,238.0 m²
- 3. FEBC Building**
Seoul, Korea Apr 2012 to Oct 2013
7 stories above ground and 4 below
Total floor space of 19,133 m²
- 4. Jamsil Veterans Association Hall**
Seoul, Korea Mar 2011 to Apr 2013
30 stories above ground and 6 below,
Total floor space of 99,259 m²
- 5. Sangam Nurikkum Square**
Seoul, Korea Aug 2005 to Nov 2007
22 stories above ground and 4 below
4 buildings
Total floor space of 152,569.07 m²





Building Works

Business & Special facilities

46-47

Business Overview

1	5
2	6
3	4
	7



1. Hanwha Q Cell Jincheon Plant
 Jincheon, Korea May 2015 to Feb 2016
 2 stories above ground and 1 below
 Total floor space of 57,659.5m²
 Solar 1.5GW Cell manufacturing plant

Hanwha Q Cell Jincheon Plant(Addition)
 Jincheon, Korea Sep 2016 to Jun 2017
 4 stories above ground, Total floor space of 132,306m² Solar 1.5GW Cell, Module 1.5GW manufacturing plant

2. Hanwha R&D Center
 Daejeon, Korea May 2015 to Aug 2017
 6 stories above ground and 2 below
 Total floor space of 50,169.99m²

3. Hanwha Pankyo R&D Center
 Seongnam, Korea May 2013 to Sep 2015
 7 stories above ground and 5 below
 Total floor space of 33,761 m²

4. Avison Biomedical Research Center
 Seoul, Korea Aug 2010 to Feb 2013
 6 stories above ground and 5 below
 Total floor space of 40,234m²

5. Yeonsei University Baekyang-ro Reinvention Project
 Seoul, Korea Aug 2013 to Apr 2015
 1 story above ground and 2 below
 Total floor space of 179,580m²

6. Jeju Harbor International and Domestic Passenger Terminal
 Jeju, Korea Oct 2013 to Jul 2015
 2 stories Total floor space of 32,410m²

7. Seoul Memorial Park
 Seoul, Korea Jul 2009 to Apr 2012
 2 stories above ground and 1 below
 Total floor space of 17,911 m²



Building Works

IDC / Sports facilities

48-49

Business Overview

1	3
	4
2	5

1. Nice group IT Center

Seoul, Korea Oct 2012 to Feb 2014
8 stories above ground and 4 below
Total floor space of 13,133m²

2. Hanwha IDC

Yongin, Korea Jun 2009 to Nov 2010
2 stories above ground and 1 below
Total floor space of 14,895m²

3. Shinhan Financial Data Center

Yongin, Korea Jun 2011 to May 2013
6 stories above ground and 5 below
Total floor space of 44,680m²

4. Taekwondo Park

Muju, Korea Jan 2010 to Jul 2013
4 stories above ground and 2 below,
19 buildings
Total floor space of 70,651 m²

5. Incheon Sipjeong Stadium

Incheon, Korea May 2011 to Jul 2013
4 stories above ground and 2 below
Total floor space of 26,720m²





Building Works

Commercial facilities /
Education & Research
facilities

50-51

Business Overview

1	4	5
2	6	7
3	8	9

- Galleria Luxury Hall WEST**
Seoul, Korea Apr 2004 to Sep 2004
5 stories above ground and 2 below
Total floor space of 21,986m²
- Buldang Hanwha Galleria, Cheonan**
Cheonan, Korea Mar 2009 to Dec 2010
10 stories above ground and 6 below
Total floor space of 110,122.70m²
- Garden 5 Shopping Mall (Southeast Distribution Complex)**
Seoul, Korea Oct 2006 to Dec 2008
11 stories above ground and 5 below
Total floor space of 423,841m²
- Gapyeong Hanwha HR Development Institute**
Gapyeong, Korea Nov 2006 to Oct 2008
4 stories above ground and 1 below, 5 buildings
Total floor space of 23,110m²
- Law school Lecture hall of Seoul Nat'l Univ.**
Seoul, Korea Sep 2012 to Oct 2013
3 stories above ground and 1 below
Total floor space 6,207m²
- Jeju English Education City I**
Jeju, Korea Jul 2010 to Aug 2011
4 stories above ground and 1 below
Total floor space of 83,486m²
- Jeju English Education City II**
Jeju, Korea Aug 2011 to Sep 2012
4 stories above ground and 2 below
Total floor space of 70,211m²
- Asem Campus, Wooksook Univ.**
Jincheon, Korea Mar 2013 to Mar 2014
5 stories above ground and 2 below
Total floor space of 43,256.2m²
- Dorms of Pukyong Nat'l Univ. and 1 other**
Pusan, Korea Jul 2014 to Feb 2016
19 stories above ground and 1 below
Total floor space of 258,388.8m²



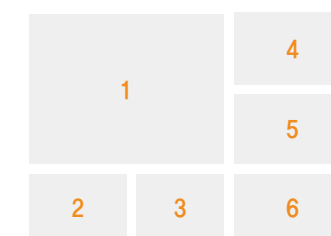


Building Works

Cultural facilities

52-53

Business Overview



- 1. Hanwha Aqua planet Jeju**
 Jeju, Korea Dec 2009 to Jun 2012
 2 stories above ground and 2 below
 Total floor space of 7,803m²
- 2. Hanwha Aqua planet Yeosu**
 Yeosu, Korea Mar 2010 to May 2012
 4 stories Total floor space of 16,400m²
- 3. Hanwha Aqua planet ilsan**
 Goyang, Korea Mar 2012 to Mar 2014
 4 stories above ground and 1 below
 Total floor space of 14,598m²
- 4. Ulsan Museum**
 Ulsan, Korea Jan 2009 to Jan 2011
 2 stories above ground and 1 below
 Total floor space of 14,400m²
- 5. Gangbuk Seoul Museum of Art**
 Seoul, Korea Feb 2011 to Feb 2013
 3 stories above ground and 3 below
 Total floor space of 17,113m²
- 6. Gimcheon Science Museum**
 Gimcheon, Korea May 2012 to May 2014
 4 stories Total floor space of 7,361m²





Building Works

Station facilities

54-55

Business Overview

1	3
2	3

1. Seoul Station Complex

Seoul, Korea Sep 2001 to Nov 2003
6 stories above ground and 2 below
Total floor space of 95,171.99m²

2. Cheongnyangni Station Complex

Seoul, Korea Apr 2006 to Aug 2010
9 stories above ground and 3 below
Total floor space of 167,492.63m²

3. Suin line Wolgot Station & two stations

Incheon, Korea Aug 2010 to Jun 2012
2 stories Total floor space of 10,283m²





Building Works

Leisure & Medical facilities

56-57

Business Overview

1	4
2	5 6
3	7 8

1. Hotel The Plaza renovation
Seoul, Korea May 2010 to Oct 2010
22 stories above ground and 3 below
Total floor space of 34,845 m²

2. Seorak Waterpia
Sokcho, Korea Jun 2005 to Jun 2006
1 story above ground and 2 below, 1 buildings
Outdoor water play facilities 29,276 m²

3. Hanwha Resort Seorak Sorano
Sokcho, Korea Jun 2010 to Oct 2011
2 stories above ground and 2 below (remodeling)
Total floor space of 2,927 m²

4. Jeju Healthcare Complex District 1
Jeju, Korea Nov 2012 to Feb 2014
1 story below and 4 stories above ground, 18 buildings
Total floor space of 36,922 m²

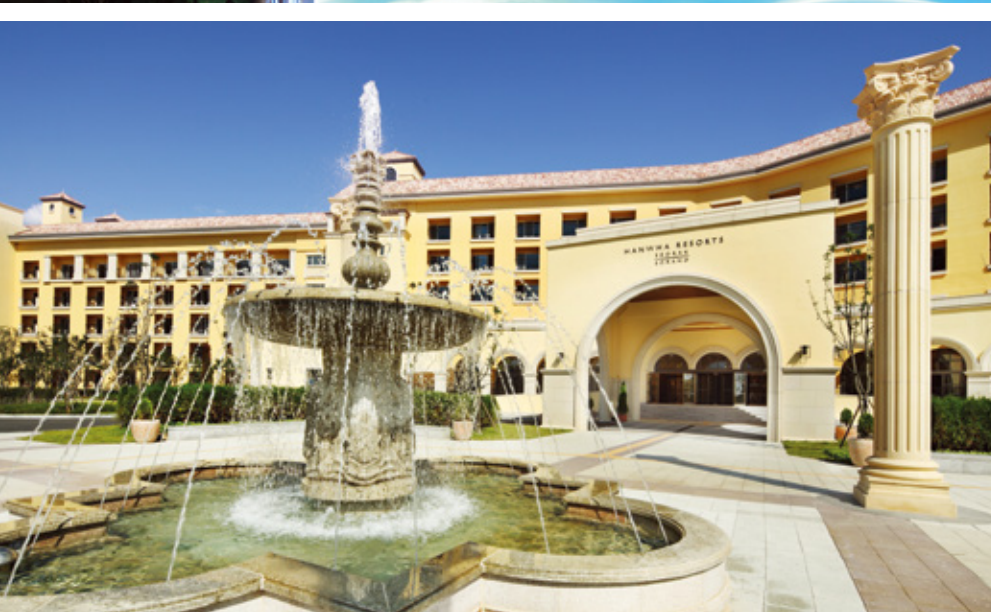
Jeju Healthcare Complex District 2
Jeju, Korea May 2013 to Aug 2014
1 story below and 4 stories above ground, 18 buildings
Total floor space of 41,315 m²

5. Yongin Resort remodeling
Yongin, Korea Sep 2014 to May 2015
6 stories below and 1 story above ground
Total floor space of 258,388.8 m²

6. Gangnam-gu Haengbok Convalescent Hospital
Seoul, Korea Apr 2012 to Feb 2014
5 stories above ground and 2 below, 307 beds
Total floor space of 18,400 m²

7. Kyung Hee University Medical Center II
Seoul, Korea Nov 2002 to Jun 2006
14 stories above ground and 4 below
Total floor space of 77,281 m²

8. Soonchunhyang University Hospital, Bucheon
Bucheon, Korea Sep 1997 to Feb 2001
11 stories above ground and 3 below
Total floor space of 52,177 m²





Special Life

Shaping up living space for leisurely life

Housing

Domestic development projects Apartments
Commercial-residential complexes & Studio apartments



Housing

Domestic
development projects

60-61

Business Overview

Hanwha Dream & Green World EcoMetro, Incheon

Incheon, Korea Oct 2006 to Mar 2014

New town development with an area of 2,380,176m²
(12,000 total units) 2 stories below and 51 stories above
ground, Apartment / Residential complex 68 buildings,
7,790 units

Hanwha Dream & Green World EcoMetro, an eco-friendly maritime residential and cultural complex, has been under construction since 2003. It is the largest mini new town in Korea to be constructed by the private sector. Under the concept of 'the Sydney of Korea,' this residential complex has drawn much attention as a role model for the urban development project as its apartment sales were successfully completed. EcoMetro is a landmark drawing worldwide attention and showcasing its large-scale residential brand town in Incheon with a total of 12,000 units, of which 'Dream & Green' apartments will account for 7,790 units.



Housing

Domestic
development projects

62-63

Business Overview

Hanwha Dream & Green World EcoMetro, Incheon

Housing

Apartments

64-65

Business Overview

1	3
2	4

1. Junggye Dream & Green 2nd Complex the First

Seoul, Korea Apr 2012 to Aug 2015
2 stories below and 26 stories above ground,
4 buildings, 283 units
Total floor space of 49,851 m²

2. Gajwa Dream & Green, Ilsan

Goyang, Korea Nov 2007 to Mar 2010
20 stories above ground and
2 below 545 units

3. Changwon Sangnam Dream & Green

Changwon, Korea Mar 2012 to Sep 2014
2 stories below and 26 stories above ground,
9 buildings, 812 units

4. Jeongneung Dream & Green

Seoul, Korea Oct 2012 to Mar 2015
5 stories below and 20 stories above ground,
8 buildings, 349 units
Total floor space of 55,514 m²





Housing

Apartments

66-67

Business Overview

1	3
2	4
	5

1. Cheongna Dream & Green, Incheon

Incheon, Korea Apr 2009 to Mar 2012
25 stories above ground and 2 below,
10 buildings 1,172 units

2. Noeun Dream & Green, Daejeon

Daejeon, Korea Jul 2011 to Jan 2014
35 stories above ground and 1 below,
17 buildings 1,885 units

3. Dream & Green World EuroMetro, Gimpo

Gimpo, Korea Nov 2011 to May 2014
23 stories above ground and 2 below,
26 buildings 2,620 units

4. Samsan Dream & Green, Ulsan

Ulsan, Korea Oct 2007 to Jun 2010
24 stories above ground and 2 below
716 units

5. Gaeum Dream & Green, Changwon

Changwon, Korea Jan 2015 to Jul 2017
30 stories above ground and 2 below
6 buildings 749 units





Housing

Commercial-residential complexes & studio apartments

68-69

Business Overview

1	3
2	4

1. Mega Centum Dream & Green, Busan

Busan, Korea Jun 2005 to Apr 2008
29 stories above ground and 3 below
1,564 units

2. Dongtan Dream & Green Prestige

Hwaseong, Korea Nov 2012 to Sep 2015
2 stories below and 36 stories above ground,
25 buildings, 1,817 units
Total floor space of 338,777 m²

3. Jamsil Galleria Palace

Seoul, Korea Oct 2001 to Feb 2005
46 stories above ground and 5 below
1,461 units

4. Eco Metro The Tower, Incheon

Incheon, Korea Feb 2010 to Mar 2013
51 stories above ground and 5 below
644 units Total floor space of 146,630 m²



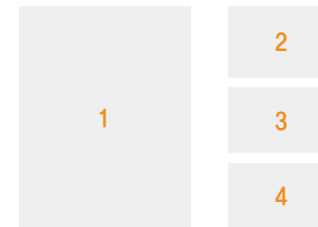


Housing

Commercial-residential complexes & studio apartments

70-71

Business Overview



1. Seoul Forest Galleria Forêt

Seoul, Korea Feb 2008 to July 2011
45 stories above ground and 7 below
230 units

2. Songpa Obelisk

Seoul, Korea Apr 2011 to May 2013
15 stories above ground and 4 below
1,533 units

3. Sangam Obelisk District 1

Seoul, Korea May 2012 to Nov 2013
10 stories above ground and 3 below
897 units

4. Sangam Obelisk District 2

Seoul, Korea May 2013 to Dec 2014
10 stories above ground and 3 below
732 units Total floor space of 35,098m²





Advanced Technology

Leading industrial advancement with top-tier technical capacity

Plants

Refinery · Petrochemical · Chemical plants · Power plants
Environmental & Industrial plants

Plants

Refinery ·
Petrochemical ·
Chemical plants

74-75

Business Overview

1	
2	4
3	5

1. AAC Ethylene Amines Project

Jubail, Saudi Arabia Dec 2007 to May 2010
27,000 ton/year of Ethylene Amine

2. Arzew Refinery Project

Arzew, Algeria Nov 2008 to Dec 2011
ADU expansion
(from 60,000 Barrel/Day to 90,000 Barrel/Day)
LNHT/Isomerization 7,500 Barrel/Day,
MTBE, Storage system and other auxiliary facilities

3. Taiwan Formosa Refinery Complex Project

Mai-Liao, Taiwan Nov 1998 to Mar 2000
Installation of crude oil storage tank and utility

4. KOTC LPG Filling Project

Umm Al-Aish, Kuwait Aug 2010 to Nov 2015
150,000m³ LPG Filling Plant composed of
6 LPG Mounded Storage Tanks,

5. Ma'aden PAP

Turaif, Saudi Arabia Dec 2013 - (in progress)
Phosphoric Acid Facilities to
produce 1.5mil ton/year



Current Project

Yanbu II Project Pkg3

Yanbu, Saudi Arabia Aug 2011 - (in progress)
HFO (10km), ALC(17km) Pipelines
Potable and Process Water
Construction of the HFO & ALC Storage &
Transfer System

Aramco JRTP Pkg-14

Jazan, Saudi Arabia Apr 2012 to Dec 2018
Maritime terminal(Terminal & Berth,
Crude Oil & Product Pipeline)

De-Aromatization Solvent Project

Daesan, Korea Jan 2017 to Jul 2018
Series of Kerosene/Diesel 50,000Ton
De-Aromatization Solvent Plant &
Creation 5 units of Outdoor storage tank

NCC SC Project

Daesan, Korea Apr 2017 to Aug 2019
Creation of Expansion facilities for Ethylene
380,000 Ton/Year

NRP Project

Kuwait City, Kuwait
Nov 2015 to Jul 2019
Creation of crude oil Purification facilities
615,000 Barrel/Day

Completion Project

ARO2 Project

Daesan, Korea Apr 2016 to Jun 2017
C. Parazylene 200,000 Ton/year
Added & Replacement Generating equipment

N-Heptane PJ

Daesan, Korea Sep 2016 to Nov 2017
Creation a production facility for
high purity solvent 12,600 Town/year

Wastewater-VAM filtration system construction project

Ulsan, Korea
Dec 2015 to Oct 2016
VAM/VCM system filtering and returning water
wasted from PVC/PSR lines



Plants

Refinery ·
Petrochemical ·
Chemical plants

76-77

Business Overview

1	3
2	4

1. Ulsan EVA Project

Ulsan, Korea May 2010 to Nov 2012
Factory to produce EVA 40,000 ton/year

2. HCC CA4(Expansion)

Yeosu, Korea Feb 2008 to Feb 2010
120,000 ton/year of CA

3. HU-chems 5NA

Yeosu, Korea Jun 2011 to Aug 2012
Nitric acid factory to produce 40,000 ton/year

4. Construction Site of Yeosu YNCC Butane #1 Expansion

Yeosu, Korea Oct 2010 to Aug 2011



Plants

Refinery ·
Petrochemical ·
Chemical plants

78-79

Business Overview

1	4
2	
3	5

1. HCC OXY 4 Expansion

Yeosu, Korea Feb 2008 to Feb 2010
EDC 150,000ton/year

2. HCC EDC/VCM Plant

Yeosu, Korea Feb 1997 to Dec 1999
EDC 150,000 ton/year
VCM 110,000 ton/year

3. Polysilicon Project

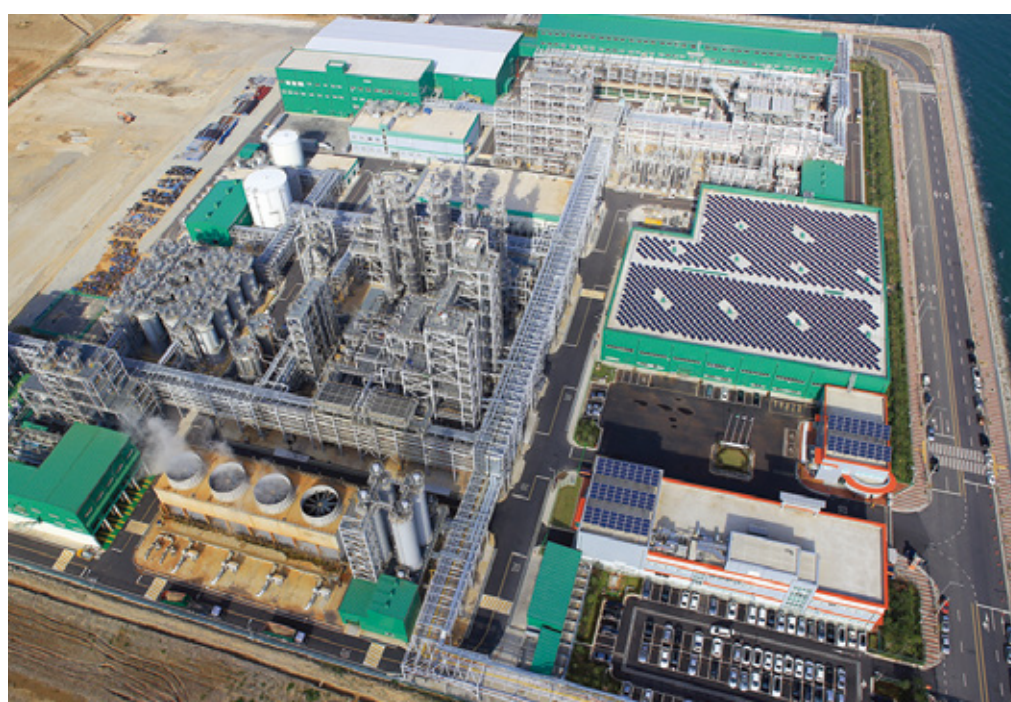
Yeosu, Korea Jun 2011 to Jun 2013
Polysilicon 10,000 ton/year
Production factory

4. Ethylene Plant #1(Revamping)

Yeosu, Korea Jul 2005 to Jun 2007
347,000MTA Ethylene

5. BASF MDI Plant (4th Expansion)

Yeosu, Korea Aug 2002 to Sep 2004
60,000ton/year



Plants

Refinery ·
Petrochemical ·
Chemical plants

80-81

Business Overview

1	3
2	4
5	

1. HCC LDPE(Expansion)

Yeosu, Korea Feb 2007 to Jul 2008
200,000ton/year

2. HCC CA/EDC

Ulsan Apr 2006 to Jun 2007
CI2 48,000ton/year
EDC 64,400ton/year

3. ATOFINA PMMA(Revamping)

Jinhae, Korea May 2003 to Apr 2004
35,000ton/year

4. HCC Octanol

Yeosu, Korea Dec 1994 to Aug 1997
90,000 ton/year

5. YNCC OCU Project

Yeosu, Korea Feb 2014 to Sep 2015
141,000 MT/Y Annual Production
of Propylene



Completion Project

YNCC C5 Separation Project

Yeosu, Korea
May 2014 to May 2016
Isoprene 38,000 MT/Y
Piperylene 22,000 MT/Y

Samcheok Lng Terminal Phase III-1 Project (#10~12tank)

Kangwon, Samcheok
Jan 2013 to Jun 2017
LNG storage tank(270 million liter) &
subsidiary equipment work

EVA2 Project

Seosan, Korea
Aug 2015 to Oct 2016
EVA 40,000ton/year

CFE Replacement & Methane Gas Sales Project

Seosan, Korea
Feb 2016 to Jun 2017
CFE replacement for increased energy efficiency
Systems to supply methane gas as city gas

D-1 Project

Ulsan, Korea
Mar 2016 to Feb 2017
Plasticizer 15,000ton/year

KNPC Halon Phase-out Project

Kuwait City, Kuwait
Mar 2011 to Oct 2014
Facility replacement of Fire System,
Alarm and Halon

K9 Project

Yeosu, Korea Dec 2010 to Aug 2012
Expansion of PVC 40,000 ton/year

XLPE Project

Yeosu, Korea Jun 2008 to Dec 2009
Expansion of XLPE 20,000 ton/year

Plants

Power plants

82-83

Business Overview



1. Yanbu II Pkg 1

Yanbu, Saudi Arabia Apr 2011 - (in progress)
270MW STG Unit 3
Construction of Process Water System
with capacity of 60,000m³/day and
its accessory facilities

2. Marafiq STG 5&6

Yanbu, Saudi Arabia Jul 2009 to Oct 2017
Unit 2 STG of 275MW 880-ton Boiler 2
Construction of HFO combustion type
fuel supply system

3. Ma'aden Power and Desalination Plant

Ras Az Zawr, Saudi Arabia
Dec 2007 to May 2012
Power plant 160MW
Desalination 40,000m³/day

4. Samra Thermal Power Station Phase III

Amman, Jordan Sep 2009 to Feb 2012
Gas turbine 290MW



Current Project

Biskra SCPP

Biskra, Algeria
Oct 2013 - (in progress)
456MW (GTG x 2) Simple Cycle Power plant

G-2 Project

Gunsan, Korea
Oct 2015 to Dec 2017
CFB Boiler 435ton/h, STG 99MW

GTG #4 Project

Daesan, Korea Apr 2017 to Oct 2019
Creation a 30MW GTG and Developing Duct
for New Side Cracker Fuel Supply



Plants

Power plants

84-85

Business Overview



1. Gunsan Cogeneration Plant

Gunsan, Korea Jun 2004 to May 2008
Two units of CFB boilers at 200 ton/hour
One unit of 55MW steam turbine

2. Cogeneration Plant in the Daegu Dyeing Industrial Center

Daegu, Korea Dec 2001 to Feb 2005
One unit of bituminous coal boiler at 150 ton/hour
One unit of 20MW STG

3. Sejong Cogeneration Plant

Yeonki, Korea Oct 2011 to Nov 2013
Two units of 167MW GTG & one unit of 196MW STG
Construction of HRSG

4. Yeosu Integrated Energy Cogeneration Plant

Yeosu, Korea Dec 2006 to Nov 2009
Three units of circulating fluidized bed (CFB) boilers at 400 ton/hour
Two units of 125MW steam turbines

5. Integrated Energy Cogeneration Plant in the Gunjang National Industrial Complex

Gunsan, Korea Nov 2007 to Oct 2011
Two units of CFB boilers at 250 ton/hour
One unit of 125MW steam turbine





Plants

Power plants

86-87

Business Overview

1	4
2	5
3	6
	7



1. Taean Thermal Power Plant (Units 7 and 8)

Taean, Korea Jul 2004 to Apr 2008
Two units of 500MW steam turbines

2. Gwangmyeong Community Energy System

Gwangmyeong, Korea May 2007 to Apr 2010
17.4MW gas turbine and 11.4MW steam turbine to supply electricity for air conditioning and heating

3. Yeongheung thermoelectric power plant No. 5,6 Main Facility Development

Incheon, Korea Apr 2010 to Dec 2014
Thermal Power Plant , STG 870 MW single unit

4. POSCO Power Combined Cycle Power Plant

Incheon, Korea Oct 1994 to Dec 2001
Four units of 450MW turbines

5. New Kori Nuc Power Plant units 5 & 6 main system

Ulsan, Korea Jun 2015 to Feb 2022
Two units of STG 1,400MW

6. Osan Cogeneration Plant

Osan, Korea Nov 2013 to Mar 2016
Gas-steam turbine combined cycle power generation(486MW/h)
Heat supply (280Gcal/h) facility

7. Yeongwol Combined Cycle Power Plant

Yeongwol, Korea May 2008 to Feb 2011
Three units of 183MW gas turbines
One unit of 299MW steam turbine





Plants

Enviromental & Industrial plants

88-89

Business Overview

1	3
2	4



1. Wonju Integrated Waste Disposal Complex

Wonju, Korea May 2012 to Nov 2014
 RDF at 160 ton/day
 Recycling facility at 35 ton/day
 Reclamation facility of 2,290,000m³

2. Suwon Recycling Infrastructure Development Project

Suwon, Korea Mar 2008 to Jul 2009
 Recycled mixed products sorting facility at 90 ton/day
 Bulk waste shredding and sorting facility at 70 ton/day

3. Yangpyeong Sludge Incinerator

Yangpyeong, Korea Jun 2000 to Jun 2001
 50 ton/day

4. Ulsan Resource Recovery Facility

Ulsan, Korea Apr 2006 to Sep 2007
 Expansion of CI2 at 48,000 ton/year
 Expansion of EDC at 64,400 ton/year

Current Project

Ma'aden Gold Project

Al humiyat, Saudi Arabia
 Feb 2013 - (in progress)
 Annual 2mil. tons of minerals to produce gold bars

History Highlights

Leaping beyond 5 decades of tireless challenge and achievements, **Hanwa E&C**, with customers, will shape the future where we will realize our dreams together

Entrepreneurship and growth

- 1967** Founded Pacific Engineering & Construction
- 1976** Obtained International Contractor certification
- 1979** Completed Seosomun Building
- 1979** Completed Jamsil Arena
- 1988** Renamed Duksan Civil Engineering & Construction Co.
- 1989** Completed **Hanwha Chemical** HDPE plant
- 1990** Completed **Hanwha Chemical** PVC Plant
- 1991** Obtained International Contractor certification
Completed **Hanwha Chemical** EDC, VCM, C/A, and ECH Plants
- 1992** Completed a refinery with a capacity of 100,000 bbl for Incheon Oil Refinery Co., Ltd.
- 1993** Completed Yecheon NCC Plant
- 1994** Awarded a Presidential Citation for Daejeon Expo Hanvit Tower
- 1996** Merged into **Hanwha Corp** as Construction Division
- 1997** Laid groundwork for Gunja Landfill Received The Korea Architecture Award (Seorak Waterpia)
- 1998** Acquired ISO 14001 and 9001 certifications
Won the Safety Management Award conferred by the Ministry of Labor
- 1999** Awarded a Presidential Citation for T-5 Oil Storage Base
- 2000** Completed Formosa, Taiwan, the first overseas plant
Laid groundwork for the Daedeok Techno Valley on the third sector basis
- 2001** Completed the **Hanwha Chemical** OXY-EDC Project
Opened the **Hanwha** Environmental Research Institute
Announced **Hanwha's** new apartment brand "Dream & Green"
- 2002** Completed **Hanwha E&C** spin-off from **Hanwha Corp.**

Leap and innovation

- 2003** Received Korean Bronze Tower Industrial Medal
- 2004** Completed Korea's first membrane water purification facilities in Siheung
Received the Seoul Citizen Care Award in the architecture category (Seoul Station Complex)
Completed 4th expansion of BASF MDI plant
Completed Jade Palace Golf Club, a top-tier golf course in Korea
- 2005** Won the 2005 Korea Green Technology Award (HDF advanced sewage treatment technology)
Completed Lancaster Condominium in the US
Completed expansion of Yecheon NCC #1
Completed construction of Galleria Palace, a top quality mixed use complex
Completed Hi-Brand in Seoul
Completed Sewage Treatment Facility in Paju
- 2006** Started construction of Incheon EcoMetro, Korea's first and largest urban development project
Expansion of Kyung Hee University Medical Center II
Expansion of **Hanwha Chemical** CA/EDC Plant in Ulsan
- 2007** Completed Tae'an Thermal Power Plant (Units 7 and 8)
Completed International Postal Logistics Center
Completed expansion of **Hanwha E&C** Research Institute of Technology
Started construction of the Integrated Energy Cogeneration Plant in the Gunjang National Industrial Complex
Received the 11th Best Apartments Awards (Dongtan Dream & Green)
- 2008** Completed **Hanwha** Human Resources Development Center, Korea's first exposed concrete technique
Received the first eco-technology license for Domestic Membrane Water treatment
Won the Grand Prize in the overall category of the 2008 Housing Culture Awards from the Korea Economy Daily (Galleria Foret)
Received the 2008 Korean Civil and Architecture Technology Award (2nd District of Dongtan Dream & Green)

Global Growth

- 2009** Completed Chandler Condominium in the US
Developed Building on an Integrated Photovoltaic System(BIPV)
Received a Presidential Citation on the 43rd Taxpayer's Day
Received the Government Decoration for Industrial Service Merit on the 2009 Housing Construction Day
- 2010** Completed AAC Ethylene Amines Plant in Saudi Arabia
Completed Saudi Ma'aden Power and Desalination Plant
Completed Riverside J Condominium in the US
Completed the 3rd Gyeongin Expressway, a large SOC project
Completed Cheongnyangni Station Complex
- 2011** Entered into the KNPC contract, Kuwait
Acquired the Korea Electric Power Industry Code (KEPIC) certification
Received President's Award in the 2011 Most Livable Apartment hosted by Maeil Business Newspaper
Received the Grand Prize in the overall category of the 2011 Housing Culture Awards from the Korea Economy Daily
Completed Seoul Forest Galleria Forêt
Completed Ministry of Knowledge Economy New Technology accreditation
Received the 2012 iF Design Award
Joined the One Trillion Won Club in winning public project orders
- 2012** Signed the MOU on the operation of waterworks system for EcoSmart
Selected as the best contractor by the Korea Land and Housing Corporation and the Ministry of Defense
Received the Overseas Construction Award
Won the largest scale overseas construction, \$8 billion of Bismayah New City in Iraq
- 2013** Ranked 10th among Domestic Construction Companies
Achieved 6th place as public sector contractor
Awarded grand prize for promotion of Cooperation in construction
Received a \$450mil. power plant order in Algeria
Introduced BNCP case at Creative Korea 2013
Selected as a creative economy example case for overseas new city development by KRIHS
- 2014** Ranked 9th among Domestic Construction Companies
Accumulated \$14 billion worth of overseas construction contracts
Completed the world's largest stadium, Philippine Arena
- 2015** Won a \$2 billion order to build the social infrastructure for Bismayah New City in Iraq
New order for construction of Sin-Gori Units No. 5 and 6 Project
- 2016** Signed MOU for new city in Saudi Arabia
Won SCPC petro chemical plant construction project (\$400 million)
- 2017** Achievement Cumulative Supply Over 70,000's Generation of Dream & Green and Studio Apartments

